



PGA

Kentucky Section



Section Orientation

Golf House Kentucky



Kentucky Golf
Foundation

Kentucky Golf
Association

Kentucky PGA



Golf House Kentucky

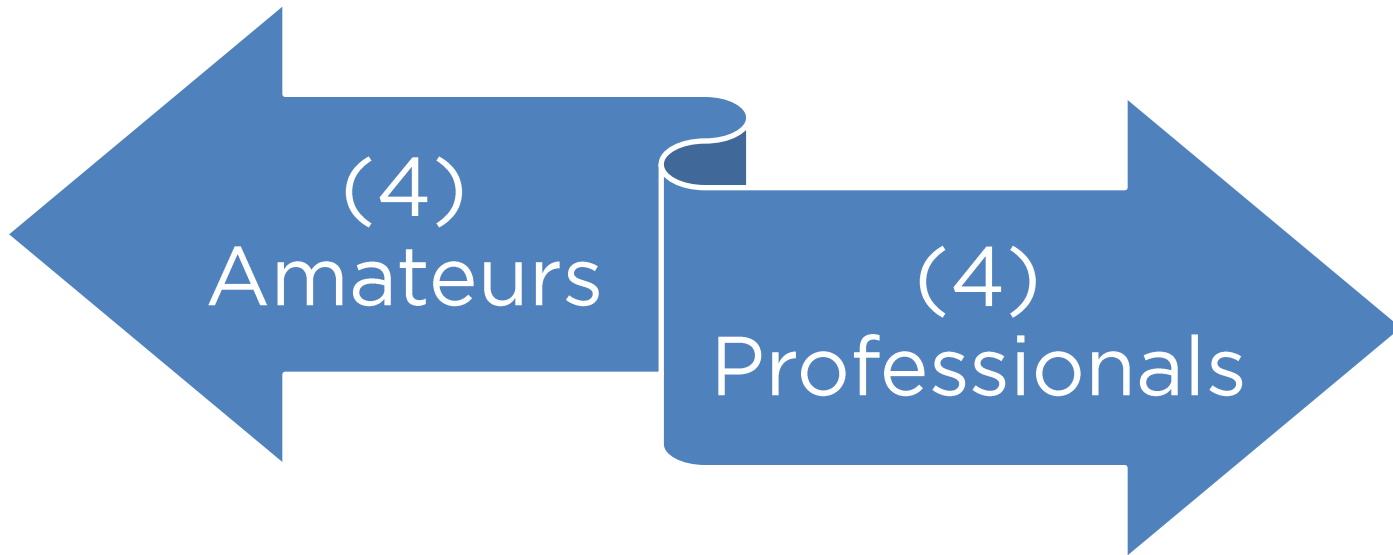
Golf House Kentucky is a unique umbrella organization that manages the Kentucky Golf Association, Kentucky PGA, Kentucky Golf Foundation, and Kentucky PGA Junior Tour. Founded in 1978 by the Kentucky Golf Association and Kentucky PGA Section, Golf House Kentucky is headquartered in a picturesque country setting in Louisville, Kentucky. Golf House Kentucky conducts competitions for golfers of all ages, gender and skill levels and provides valuable services to Kentucky PGA Professionals and member golf facilities.



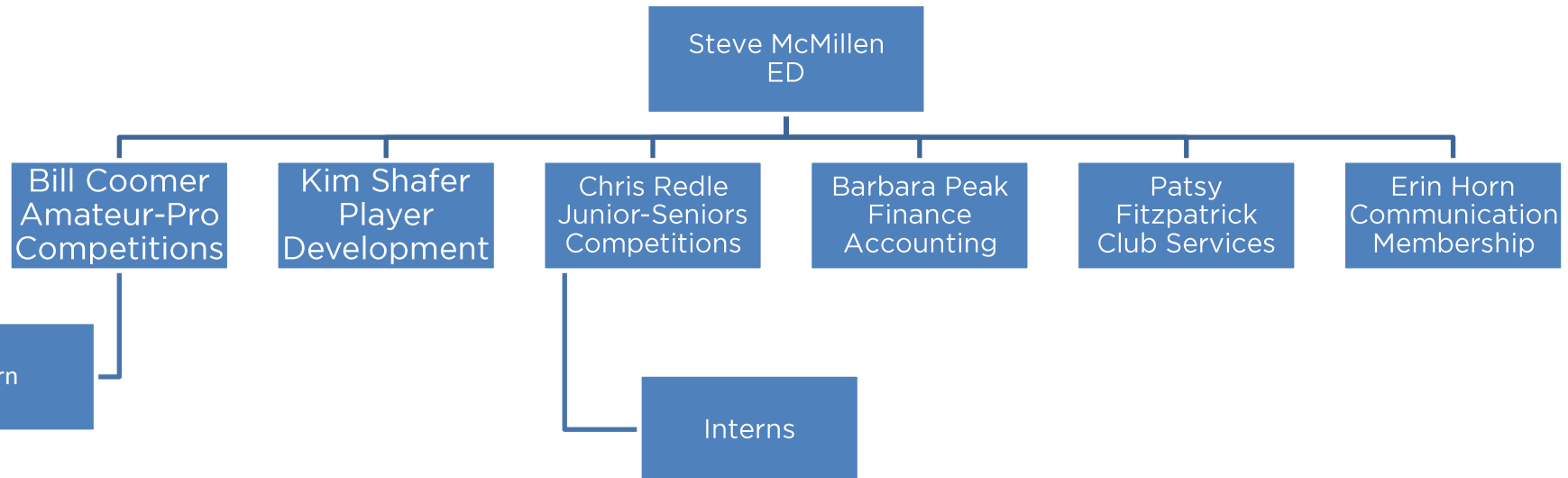
Golf House Kentucky

Working in partnership with the USGA, Golf House Kentucky provides individual golfers and member golf facilities with a wide range of services: Handicapping, USGA Course and Slope Rating, award programs, club consulting and golf management software. The family's philanthropic affiliate, Kentucky Golf Foundation through the Kentucky Golf Hall of Fame, Kentucky Golf Museum, youth grants and growth of the game initiatives; promotes the past, supports the present and develops the future of golf in the Commonwealth of Kentucky.

Leadership



Staff



Kentucky PGA

OUR PUROSE

To promote the enjoyment and involvement in the game of golf and to contribute to its growth by providing services to golf professionals and the golf industry.

The KPGA will accomplish this mission by enhancing the skills of its professionals and the opportunities for amateurs, employers manufacturers, employees and the public.

In so doing, the KPGA will elevate the standards of the professional golfer's vocation, enhance the economic well-being of the individual member, stimulate interest in the game of golf, and promote the overall vitality of the game.

Leadership

Board

- Officers
- District Directors
- At-Large Directors
- Assistants-Apprentice President
- Executive Director

Executive Committee

- President (Ralph Landrum)
- Vice President (Pete Garvey)
- Secretary (Craig Heibert)
- Honorary Past President (Kelly Williams)

Leadership

Committee Chairs

- Assistants/Apprentice
- Education
- Finance
- Growth of the Game
- Marketing
- Membership
- Special Awards
- Tournament

Will Schneider
Craig Heibert
Ralph Landrum
Ralph Landrum
Barry Payne
Craig Heibert
Colby Wollitz
Kris Kleinsasser

Digital Properties

kygolf.org – Section Website

Visit the PGA Login section of the website for KPGA specific information.
Use the password “kpga” (case sensitive)

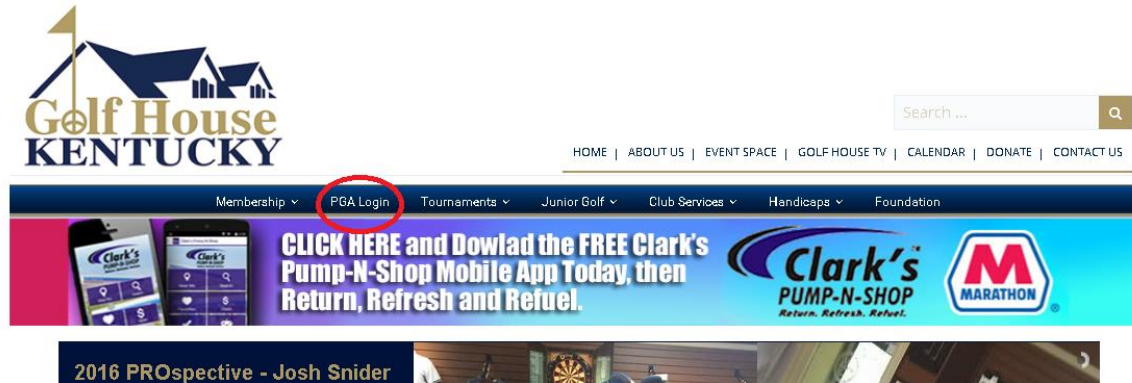
Mobile App – GHIN Mobile (IOS & Android)

Golf House Kentucky / KPGA Social Media:

- Facebook – facebook.com/golfhouseky
- Instagram – [@golfhouseky](https://www.instagram.com/golfhouseky)
- Twitter – [@golfhouseky](https://twitter.com/golfhouseky)
- Golf House KY TV – On website via YouTube



Member Portal



Visit Us online
Kyggolf.org

Login
kpga (all lower case)

KPGA Weekly

- Monday mornings
- Includes:
 - Tournament News & Notes
 - Important Info from The PGA
 - KPGA Facility Equipment Sales
 - Latest News in the KPGA
 - New Members, Apprentices & Section Transfers
 - Deadline Reminders
 - Career Notes, by Dick Bradow
 - Calendar of Events
 - PGA Job Board Postings
 - Exclusive News from KPGA Partners
- Also available online at kygolf.org in the PGA Login area



Upcoming Opportunities

Are you registered for the current Education, Training, Player Development and Other Opportunities?

The password to access any protected information is kpgp and is case sensitive.

SMALL GROUP MEETINGS

Deadline this week!
Join Kim Stoffer in your area as she shares ideas to grow your golfers and your revenue!
[For More Info & to Register](#)



RETAIL WORK SHOP

February 16, 2016
Denny Marsh moderates a panel of regional experts: Tony Rancake, Eric Gilliland and Jason Scaria in this central area workshop on the complete life cycle of retail management!
[For More Info & to Register](#)

DEVER | E-Z-GO SPRING MEMBER CONFERENCE

February 16, 2016
Catch up on the progress of the Kentucky PGA, celebrate our Special Award winners and enjoy an afternoon Teaching Summit with keynote speaker James Seckmann! This year will also feature an additional (optional) Teaching Summit at Kiara Trace Golf Club (Champions Course) on Tuesday, March 1 featuring keynote speaker Kevin Smith and local outstanding Professionals Jon Hardesty, Scott Sedgwick & Larry Ward. Complete details will be posted on kygolf.org soon, but registration is available now!
[Register Now](#)

ASSISTANT CAREER ADVANCEMENT WORK SHOP

March 7, 2016
Assistant professionals looking to land THE job need to attend this seminar. Pete Garvey & Dick Bradow discuss resume critiques, dressing for success, day of interview tips, sharing your career path & finding the right opportunity!
[For More Info & to Register](#)

PLAYER DEVELOPMENT WORK SHOP

March 28, 2016
7-time Youth Player Development Award Winner Donna Carvill joins Kim Stoffer in this seminar hosted by the top notch PGIM Golf Facility at Eastern Kentucky University!
[For More Info & to Register](#)

Membership Spotlight

Jan/Feb Career Notes 1 episode:

- PGA.org Employment Resources
- PGA Compensation Survey
- Employer Communication Plan
- PGA PerformanceTrack
- CareerLinka Reminder



[Read Career Notes Jan | Feb Edition Now](#)

[Link to PGA Job Board](#)

Current Job Board Posting For Kentucky Teaching Professionals

Triple Crown Country Club

Be Involved



- Be an asset to your facility
- Understand apprentice education requirements and maintain good standing
- Be aware of KPGA Constitution & Bylaws
- Get involved in your Section
 - PGA Golf Day
 - Golf In Schools
 - Tournament Play/Networking
 - PGA Junior League
 - Pro2Pro
 - PGA Reach
 - PGA Championship Volunteers
 - Kentucky PGA Junior Tour
- Code of Conduct & professionalism
- Playing other facilities

Education Opportunities

Member Conferences

- Spring
- Fall

Workshops

- District Workshops
- KPGA Teaching Summit
- KPGA Growth of the Game Summit

Pro2Pro



Tournament Opportunities

- Section Website
 - Tournament Schedule
 - Tournament Regulations
 - Eligibility
 - When you can sign up
- Section Events
- Pro-Ams
- Assistants Championship
- Assistants Match Play Championship
- Assistant Player of the Year



Support

National Support

- PGA.org
- PGA Education Center - (866) 866-3382

KPGA Office Support – (502) 243-8295

- Erin Horn, PGA
Director Communications-Membership – ext. 306,
ehorn@kygolf.org

Career Services

- Dick Bradow, PGA
PGA Career Consultant – (502) 458-2002

Pro2Pro



Dick Bradow, PGA



PGA

Kentucky Section



Section Orientation